

Road Safety and Travel Awareness
Council House
Mary Stevens Park
Stourbridge
DY8 2AA



01384 815433

Summary of Road Accident Statistics 2004 – Dudley MBC

One of our main roles is to reduce the number and severity of road traffic casualties that occur. We do this through education, publicity, and training.

It is estimated that in the West Midlands in 2004 road traffic casualties resulted in a cost to the community of approximately £506 million.

A summary of casualties within Dudley MBC for 2004 is provided below.

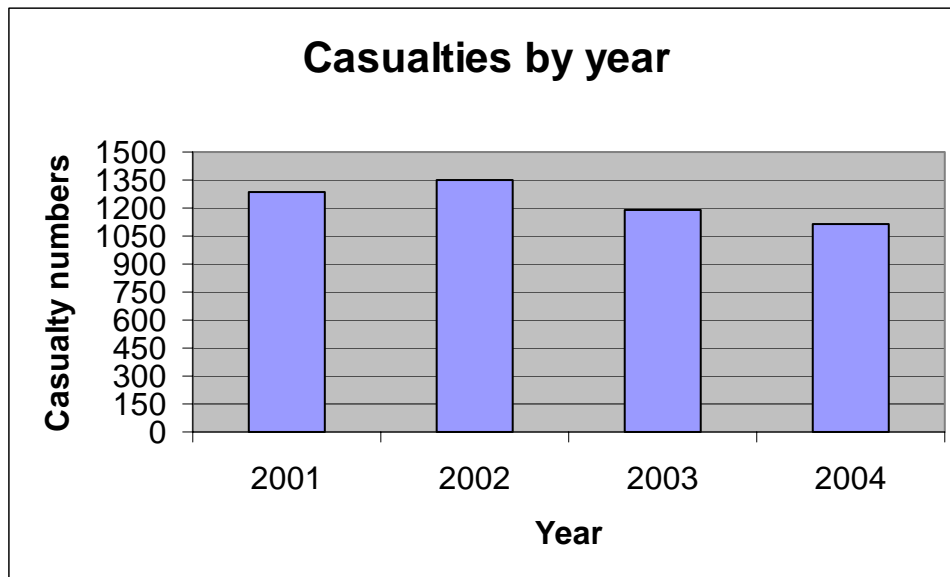
National statistics regarding all aspects of road transport (including road traffic casualties) can be obtained from the [National Statistics](http://www.statistics.gov.uk/CCI/nscl.asp?ID=8100) website.
(<http://www.statistics.gov.uk/CCI/nscl.asp?ID=8100>)

1. [Casualty numbers by year](#)
2. [2004 casualty numbers by age group](#)
3. [2004 casualty numbers by class](#)
4. [2004 casualty numbers by severity](#)
5. [Child casualty numbers by year](#)
6. [2004 child casualty numbers by class](#)



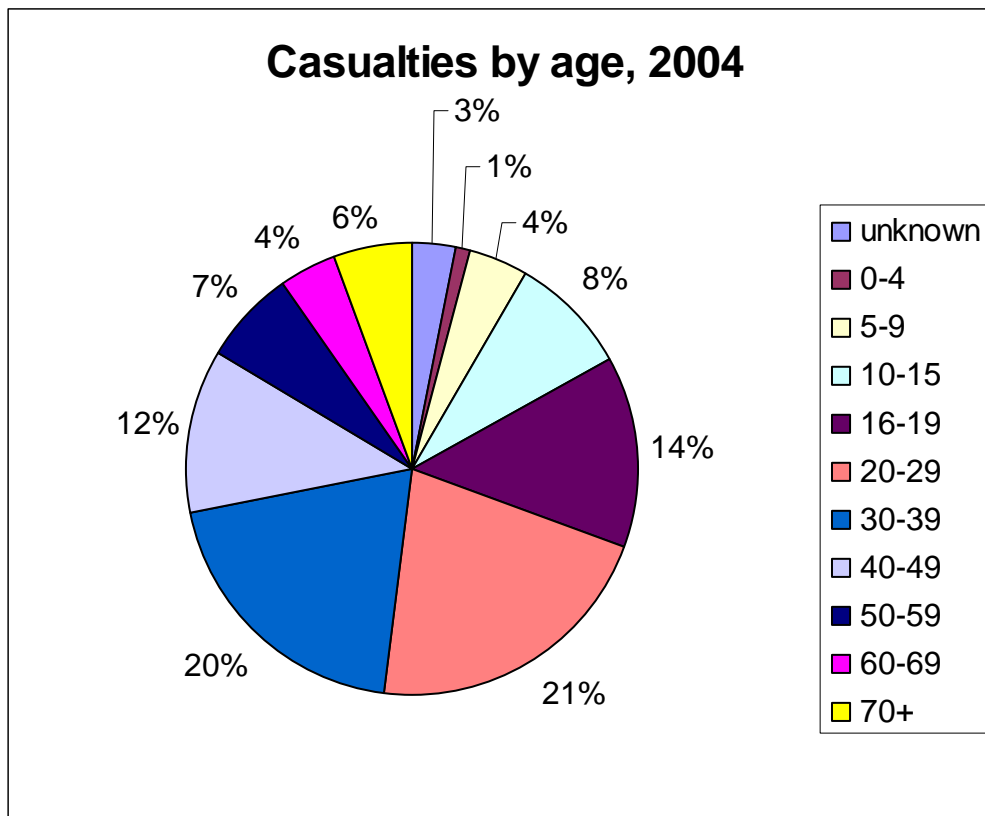
1. Casualty numbers by year

year	casualty numbers
2001	1290
2002	1351
2003	1194
2004	1111



2. 2004 casualty numbers by age group

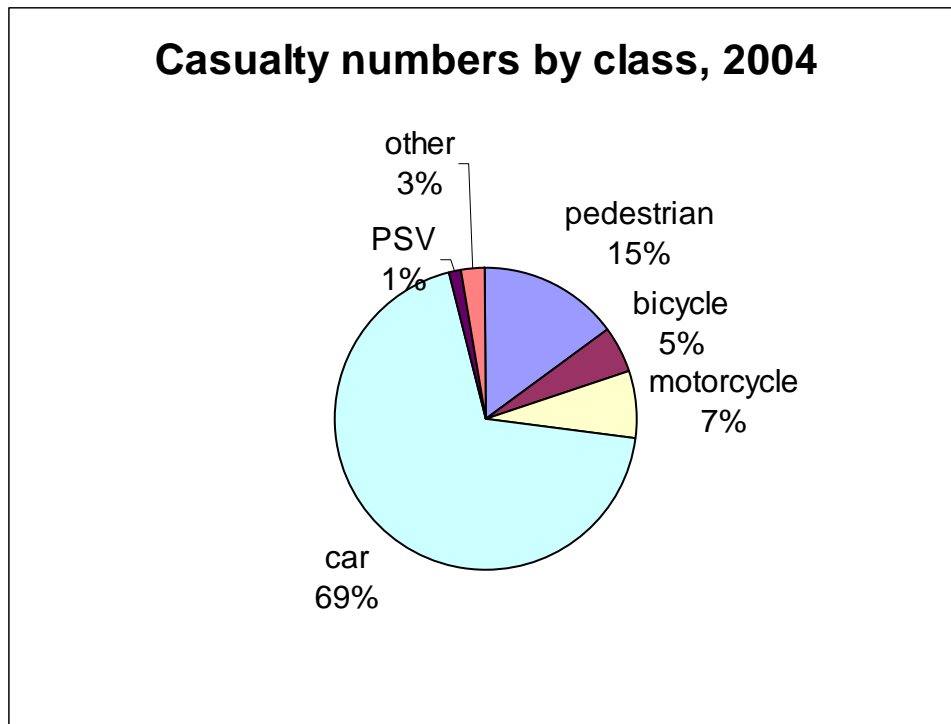
age group (years)	casualty numbers
unknown	33
0-4	14
5-9	47
10-15	94
16-19	150
20-29	240
30-39	222
40-49	130
50-59	73
60-69	46
70+	62
total	1111



3. 2004 casualty numbers by class

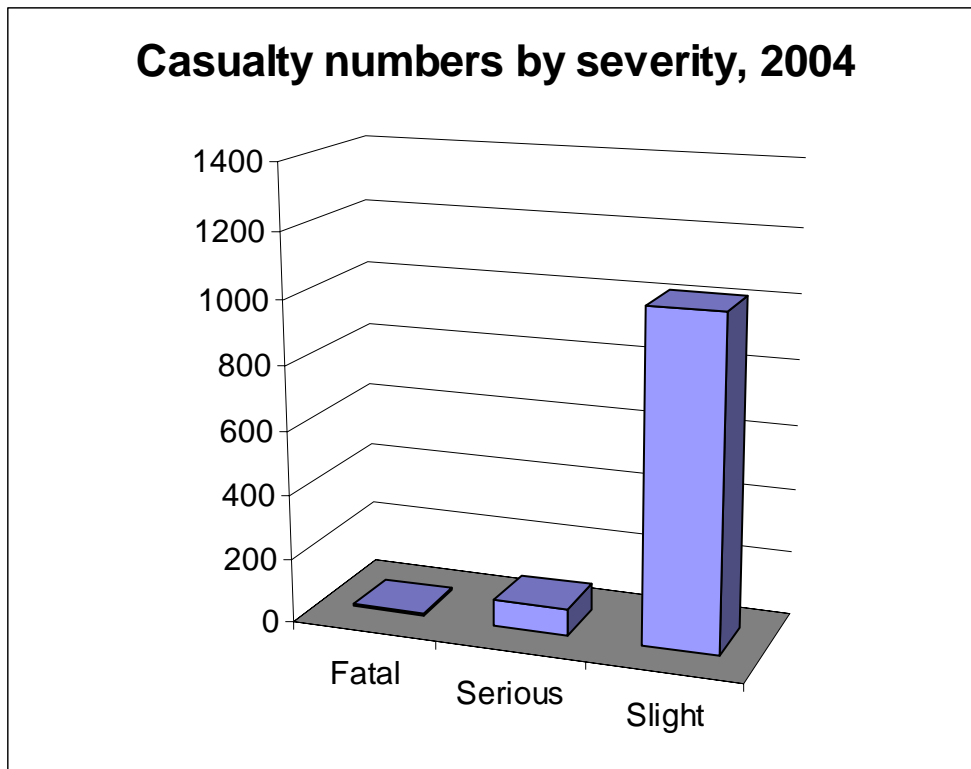
note: Public Service Vehicle (PSV)

class	casualty numbers
pedestrian	168
bicycle	54
motorcycle	81
car	764
PSV	15
other	29



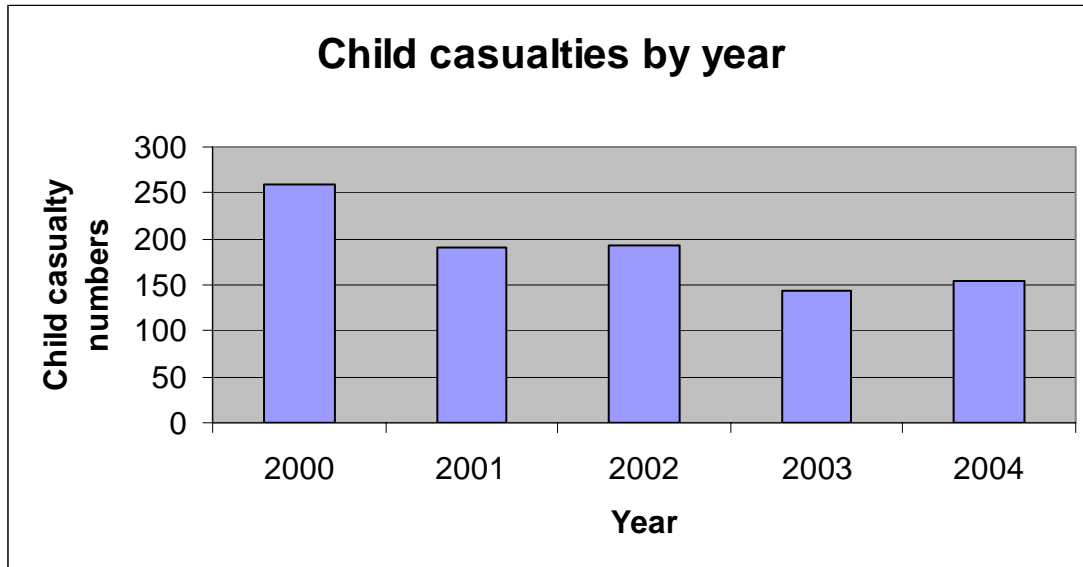
4. 2004 casualty numbers by severity

severity	casualty numbers
Fatal	9
Serious	81
Slight	1021



5. Child casualty numbers by year

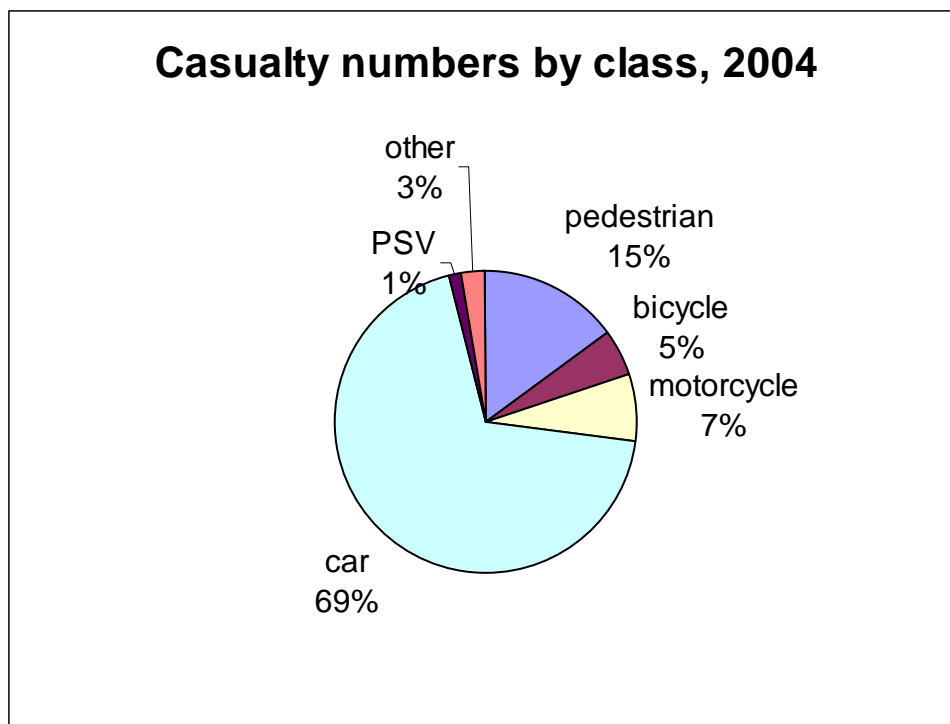
year	child casualty numbers
2000	259
2001	190
2002	192
2003	143
2004	155



6. 2004 child casualty numbers by class

note: Public Service Vehicle (PSV)

class	child casualty numbers
pedestrian	67
bicycle	16
motorcycle	0
car	67
PSV	3
other	2



For more information contact the Road Safety Team:

Phone 01384 815433

Email rsafety.due@dudley.gov.uk

Web www.edu.dudley.gov.uk/roadsafety



**Road Safety and Travel Awareness,
Council House, Mary Stevens Park, Stourbridge. DY8 2AA**