

Unemployment & Worklessness

Unemployment

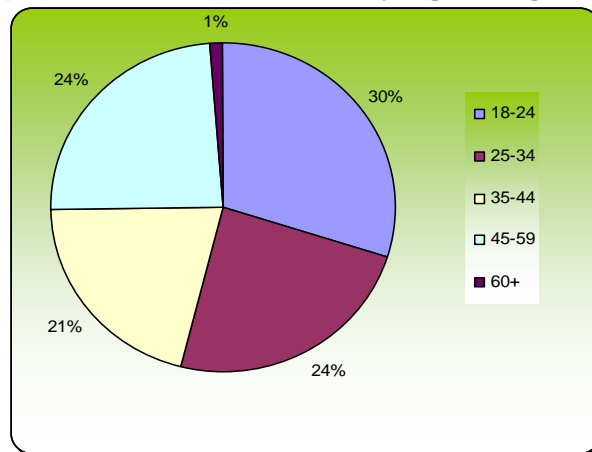
- In August 2010, 9,474 people in Dudley Borough were in receipt of Jobseekers Allowance (JSA); equating to 4.9% of the Borough's population; above the rate for the West Midlands and England. The Borough has the lowest JSA rate of the 4 Black Country Authorities; 1.2 percentage points below Walsall which has the second lowest rate. In comparison, Wakefield has a JSA rate of 3.9%; just 0.4 percentage points above the national rate.

Profiling Unemployment in Dudley Borough

Age

- In August 2010, JSA claimants aged 18-24 accounted for the largest proportion of claimants in the Borough, accounting for 29.9% of all JSA claimants. Those aged 25 to 34 and 45 to 59 accounted for 23.7% and 24.1% of all claimants respectively.

Proportion of JSA Claimants by Age - August 2010



Source: Nomis

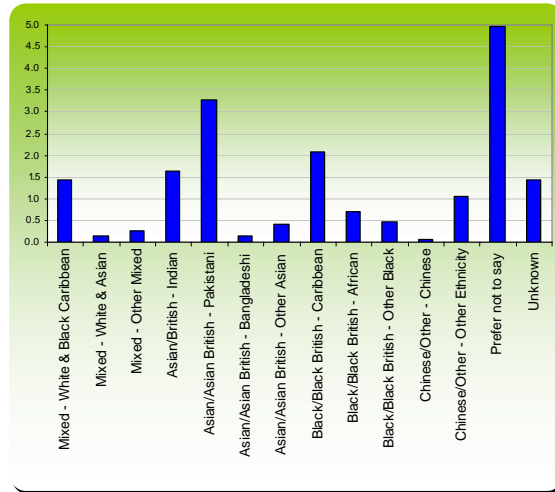
Gender

- In August 2010, the JSA rate in the Borough for males was 7.0% compared with the West Midlands rate of 6.5% and the England rate of 4.9%. The JSA rate for females in the Borough was 2.9% compared to 2.6% in the WM region and 2.2% in England. At its peak between 2005 and 2010, the rate for males reached 8.5% whilst the rate for females reached 3.0%.

Ethnicity

- In July 2010, those JSA claimants classified as White - British, accounted for 82.2% of all claimants (7,655 people); 4.7% of the Borough's White-British population. 11.7% of those claiming JSA were from ethnic minority groups (1,105 people).
- The highest proportion of claimants from these groups were Asian or Asian British - Pakistani who accounted for 3.3% of all JSA claimants (310 people) which equates to 6.2% of the Borough's population classified as Asian or Asian British - Pakistani.
- Black or Black British - Caribbean accounted for the second highest ethnic minority group, accounting for 2.1% of all claimants and 9.8% of the Borough's population classified as or Black British - Caribbean.

Proportion of JSA Claimants by Ethnic Minority Group - July 2010

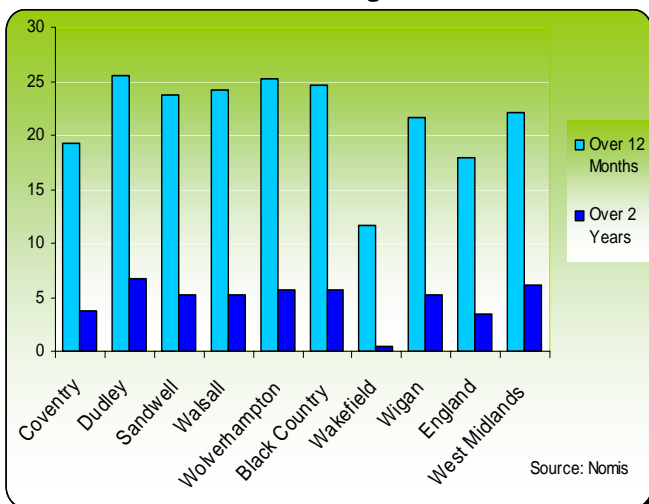


Source: Nomis

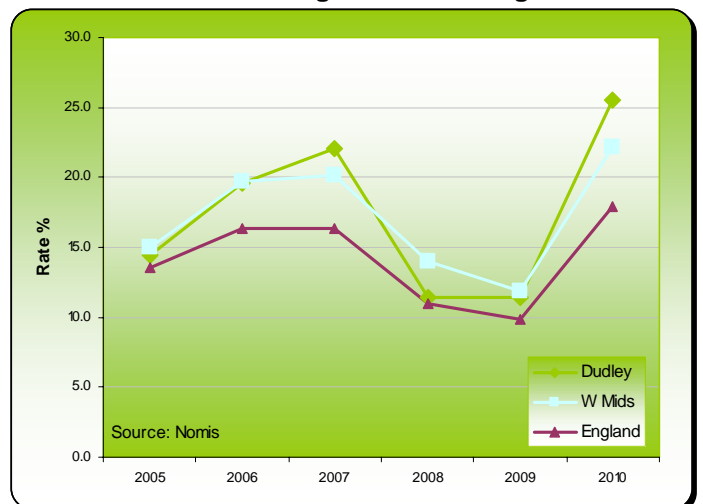
Long Term Unemployment

- In August 2010, 4,205 people in the Borough had been claiming JSA for longer than 6 months; 44.4% of all JSA claimants. The proportion is higher than both the West Midlands (41.3%) and England (36.8%) average.
- In August 2005, 31.9% of all claimants had been claiming for longer than 6 months, increasing by 12.5 percentage points over the 5 year period to 2010; a considerably sharper increase than both regionally and nationally.
- Those claiming JSA for longer than 12 months accounted for 25.5% of all claimants in August 2010 (2,415 people), compared with 14.4% in 2005. Again, this increase over the 5 year period was sharper in Dudley Borough (11.1 percentage points) than regionally (7.1 percentage points) and nationally (4.3 percentage points).
- The Borough has the second highest proportion of claimants claiming for over 12 months in the WM region.
- In August 2005, 6.6% of all claimants had been claiming JSA for longer than 2 years.

Long Term Unemployment as a proportion of JSA Claimants - August 2010



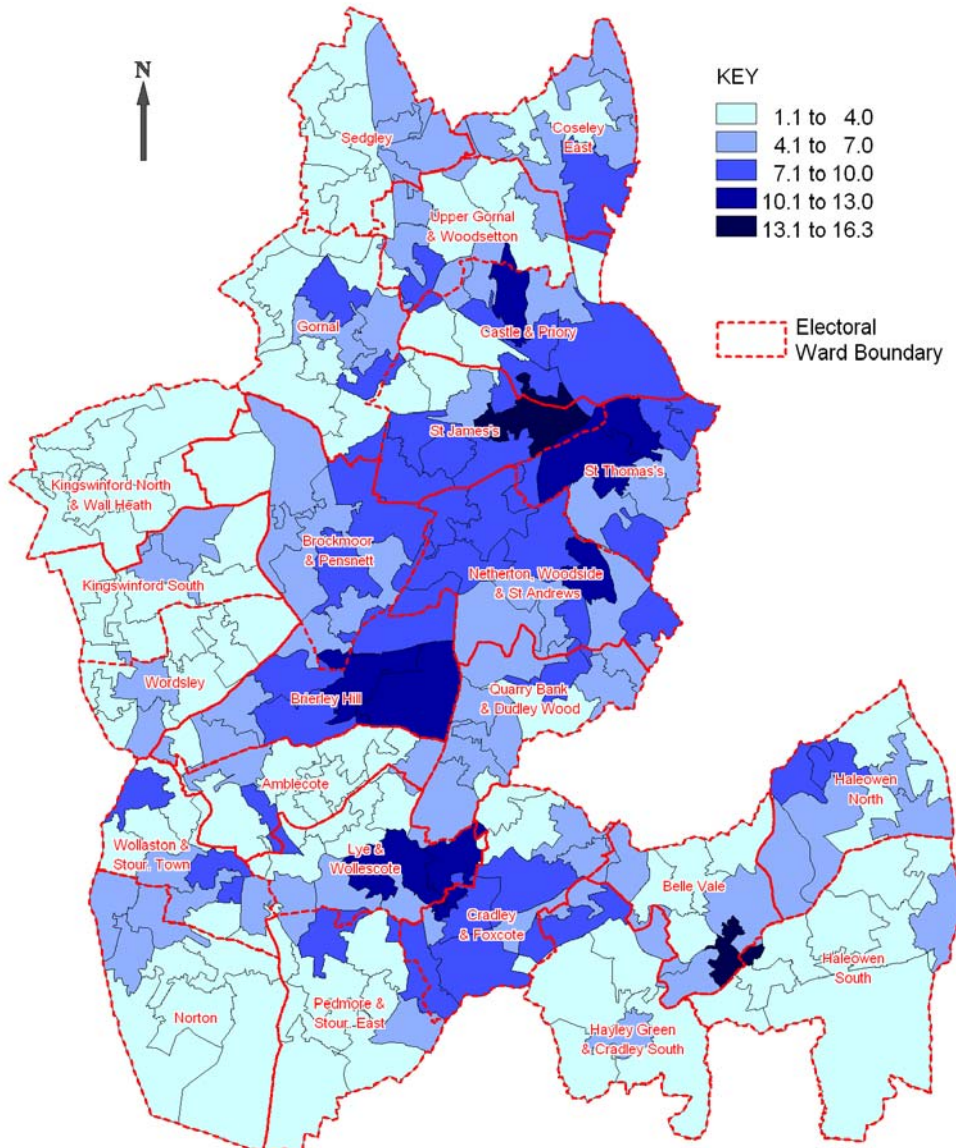
Proportion of JSA Claimants claiming for longer than 12 Months - August 2005 to August 2010



Concentrations of Unemployment

- In August 2010, a quarter of the wards in the Borough had a JSA rate higher than 6%. 3 wards had a rate above 7%; these wards being Brierley Hill Ward (7.6%), Netherton, Woodside & St Andrews Ward (7.2%) and St Thomas's Ward, which had the highest rate in the Borough (8.3%). However, some areas of the Borough have much higher incidence of unemployment.
- Of the 202 LSOAs in the Borough, 11 had a JSA rate above 10%; more than double the rate for the Borough. There were 3 LSOAs with a JSA rate above 13%. The LSOA with the highest rate of unemployment (LSOA 733) is situated within Belle Vale ward and had a JSA rate of 16%. The ward itself had an overall JSA rate of 5.7% with no other LSOA in the ward having a rate above 6.8%.

Percentage of Working Age People Claiming Jobseeker's Allowance (JSA), August 2010, Super Output Areas, Dudley Borough



Source: Office for National Statistics (ONS)

Produced by: NL, 11/10/2010, Corporate Policy & Research Team, Dudley M.B.C.

Based on the Ordnance Survey mapping with the permission of the Controller of Her Majesty's Stationery Office © Crown Copyright
Unauthorised reproduction infringes Crown Copyright and may lead to prosecution or civil proceedings. Dudley M.B.C. 100019566

Worklessness

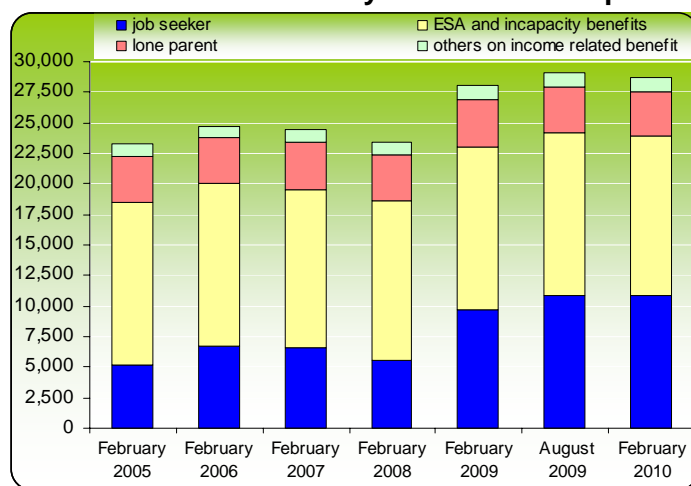
Working Age Benefits

- Working age benefits are social security benefits which are available to people of working age who are out of work or have a low income. In February 2010, there were a total of 34,370 benefit claimants in Dudley Borough. This accounts for 17.8% of the working age population compared to 17.1% in the WM region and 14.7% in England.

Out of Work Benefits

- Out of Work benefits are an indicator of worklessness that combines several types of benefit related with worklessness. Key working-age benefits are JSA, Incapacity Benefit and Severe Disablement Allowance or Employment Support Allowance, Income Support, and Disability Living Allowance.
- In February 2010, there were 28,770 people claiming out of work benefits in the Borough; 14.9% of the working age population. This rate is 0.4 percentage points higher than the WM region rate and 2.4 percentage points higher than the England rate. The Borough has the lowest rate of out of work benefit claimants in the Black Country; the second lowest being Walsall with a rate of 18.6%. The rate in Dudley Borough is also lower than the other comparator areas - Coventry (15.5%), Wakefield (15.4%) and Wigan (16.9%).
- Almost a third (31.9%) of people in receipt of out of work benefits in the Borough had been claiming for 5 years or longer; accounting for the largest proportion of all claimants. This proportion was slightly higher in both the West Midlands and England. Just over a quarter (26.5%) of all claimants had been claiming for less than 6 months; again slightly lower than the West Midlands and England rate.

Proportion of Benefit Claimants by Statistical Group - Dudley Borough



Source: Nomis

Jobseekers Allowance

- Those claiming JSA accounted for 37.3% of all out of work benefit claimants in February 2010; The proportion of all claimants of this benefit increased by 15.3 percentage points from 22.2% in February 2005.

Employment Support Allowance (ESA) and Incapacity Benefits (IB)

- In February 2010, there were 13,070 people in Dudley Borough claiming ESA or IB; accounting for 6.8% of the working age population and 45.4% of all out of work claimants in Dudley Borough. The rate is below the average for the Black Country and the West Midlands but slightly above the

England rate of 6.3%. The proportion of claimants in receipt of this benefit decreased by 11.8 percentage points between 2005 and 2010.

Lone Parents

- There were 3,660 people in Dudley Borough claiming the Lone Parent element of Income Support in August 2010; 1.9% of the working age population and consistent with the WM region (2%) and England (1.8%). Lone Parents accounted for 12.7% of all claimants in February 2010, a decrease of 3.7 percentage points from February 2005.

Others on Income Related Benefits

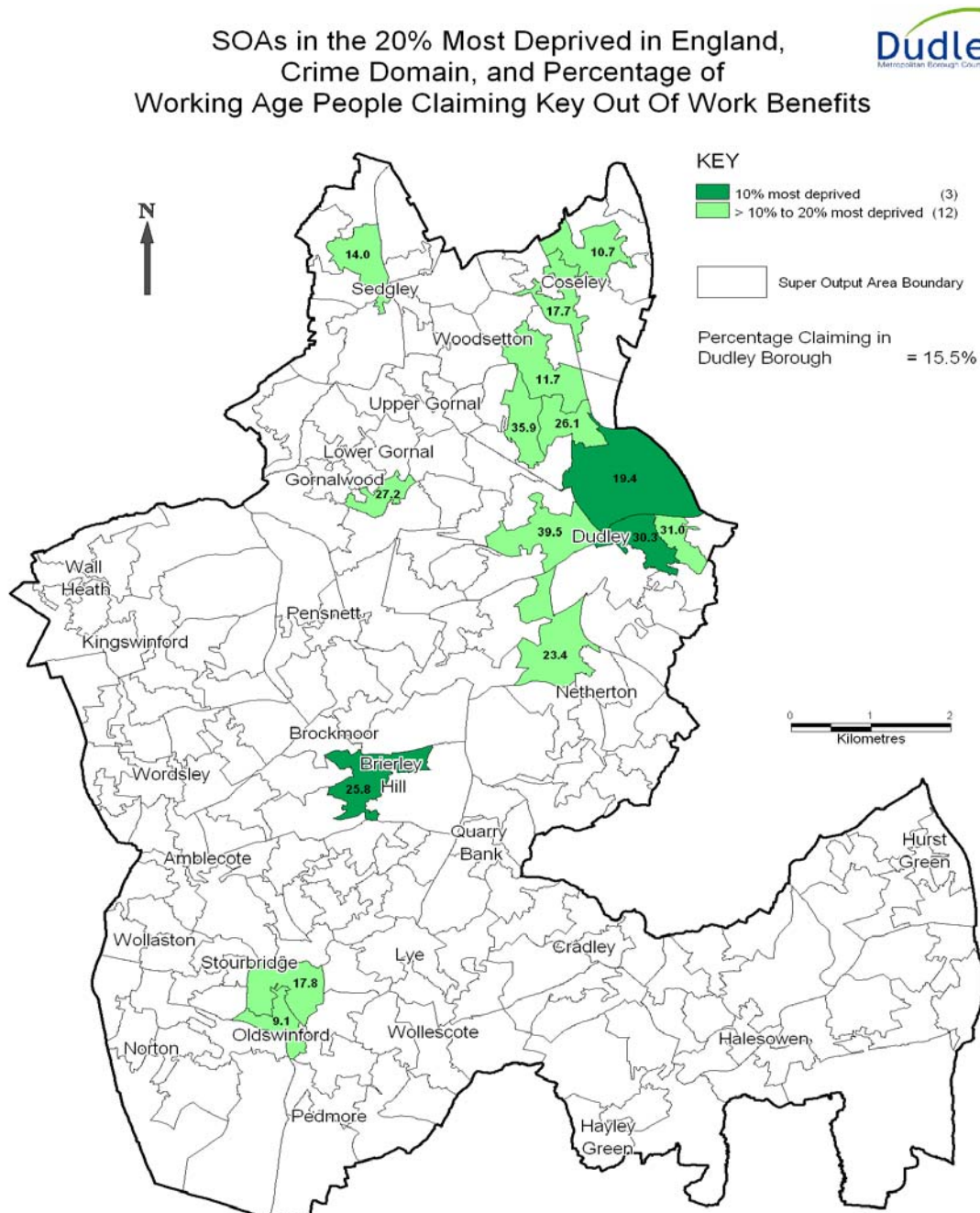
- Those claiming other forms of income support accounted for 4.3% of all out of work benefit claimants in February 2010; a total of 1,240 people (0.6% of the working age population). The proportion of all claimants claiming these benefits remained relatively unchanged between 2005 and 2010.

Links between Worklessness and other Socio-Economic Factors

- Analysis has been undertaken to identify the links between levels of worklessness across the Borough and other socio-economic factors including crime, health and skill levels using the Index of Multiple Deprivation (IMD).
- The following maps highlight those LSOAs in the Borough which are in the top 20% most deprived in each individual domain and the out of work benefit rate for that LSOA (August 2010).

Crime and Disorder

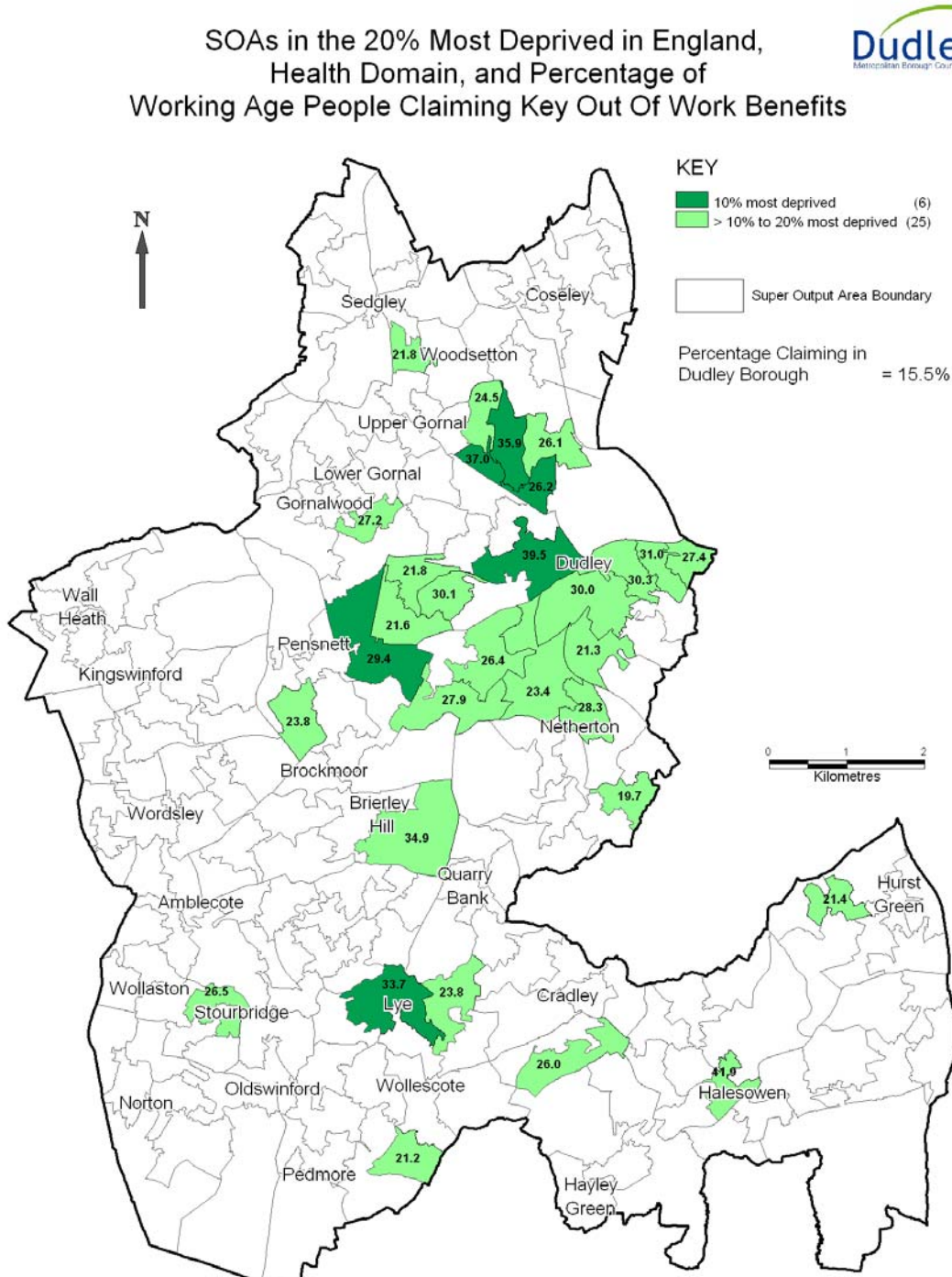
- Of the 15 LSOAs which fall into the top 20% most deprived in England in the Crime and Disorder domain, 9 have a out of work benefit rate above 15%. There are 3 LSOAs which fall into the top 20% most deprived in England; of these LSOAs, one LSOA situated in Castle & Priory Ward has a rate of 19.4%, one LSOA situated in Brierley Hill Ward has a rate of 25.8% and one LSOA situated in St Thomas's Ward has a rate of 30.3%.



Source: Index of Multiple Deprivation 2007, DCLG / Department for Work and Pensions, Nov 2009
 Produced by: NL, 26/07/2009, Strategic Research & Intelligence Team, Dudley M.B.C.
 Based on the Ordnance Survey mapping with the permission of the Controller of Her Majesty's Stationery Office © Crown Copyright
 Unauthorised reproduction infringes Crown Copyright and may lead to prosecution or civil proceedings. Dudley M.B.C. 100019566

Health Deprivation

- There are 31 LSOAs in the Borough which fall into the top 20% most deprived in England in the Health domain. Of these LSOAs, the lowest out of work benefits rate is 21.4%; 5.9 percentage points higher than the Borough average. There are 6 LSOAs which fall into the top 10%; the lowest claimant rate being 26.2% in Castle & Priory Ward and highest 39.5% also in Castle & Priory Ward.



Source: Index of Multiple Deprivation 2007, DCLG / Department for Work and Pensions, Nov 2009
 Produced by: NL, 26/07/2009, Strategic Research & Intelligence Team, Dudley M.B.C.
 Based on the Ordnance Survey mapping with the permission of the Controller of Her Majesty's Stationery Office © Crown Copyright
 Unauthorised reproduction infringes Crown Copyright and may lead to prosecution or civil proceedings. Dudley M.B.C. 100019566

