

Young People in Dudley Borough

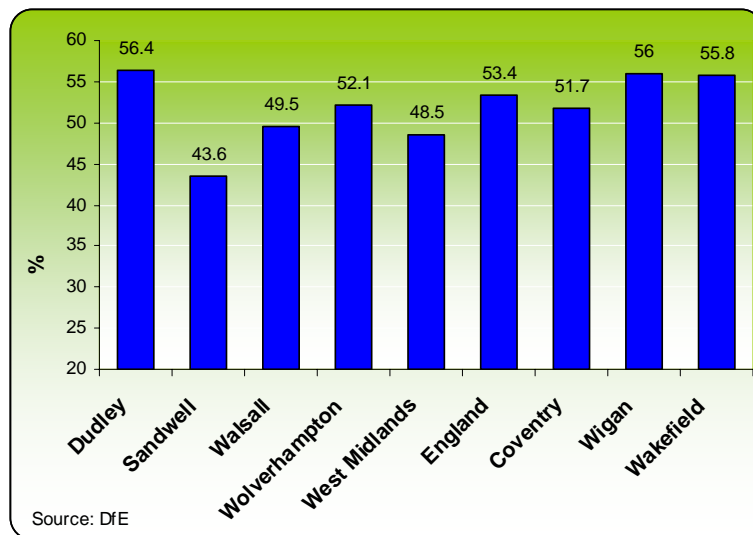
Population

- According to the mid-2009 population estimates, 5.1% of the Borough's population are aged 16 to 19 (15,700 people). This compares with 5.4% in the WM region and 5.2% in England.
- There are 17,500 people aged 20 to 24 in the Borough which accounts for 5.7% of the total population; slightly lower than the WM region (6.8%) and England (6.9%).

GCSE Performance

- In 2010, 56.4% of pupils in Dudley Borough achieved 5 or more A*-C GCSE grades including English and Maths; higher than the average for the WM region (54.2%) and England average (53.4%). The Borough's attainment rate was the highest of the four Black Country areas and higher than all CIPFA comparator areas.

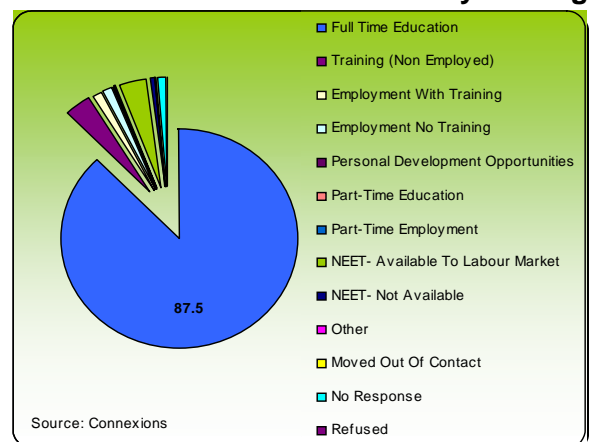
**Percentage of pupils achieving 5+ A* to C including English and Maths
2009/2010**



Destinations at Year 11

- The 2009 Year 11 Destination report produced by Connexions shows that the proportion of 16 year olds continuing in full-time education increased by 7.3 percentage points from 80.2% in 2008 to 87.5% in 2009, the largest increase of the 4 Black Country areas.
- Dudley Borough now has the highest full-time education participation rate in the Black Country. The proportion entering training (non-employed) decreased by 1.2 percentage points to 3.6% in 2009.

2009 Year 11 Destinations - Dudley Borough



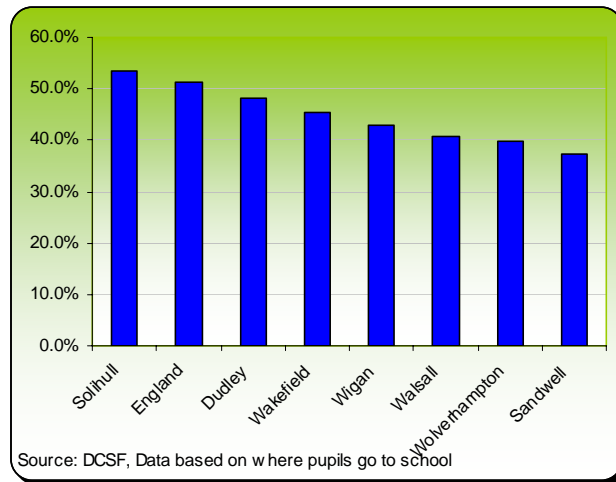
- 1.6% of those aged 16 went into employment with training in 2009 whilst 1.1% went into employment with no training. Participation in learning increased by 4.2 percentage points from

88.5% in 2008 to 92.7% in 2009, again the largest increase of the 4 Black Country areas. Dudley Borough also now has the highest participation in learning rate in the Black Country.

Further Education

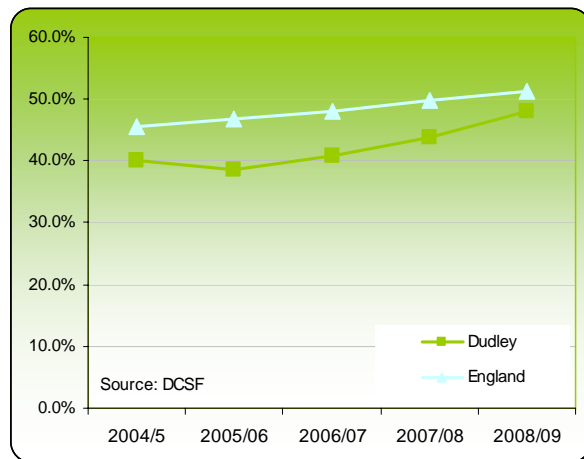
- The Borough offers four further education institutions. Dudley College, which established an A-Level Academy in 2007, Stourbridge College, Halesowen College and King Edward VI College; one of the highest attaining colleges in the country.
- The chart below illustrates the proportion of people in the Borough aged up to 19 reaching Level 3. A learner is defined as having reached the level 3 threshold if they have achieved the equivalent of 4 AS / 2 A-levels.
- In 2008/9, 48.1% of young people attending school/college in the Borough reached Level 3 compared with the national average of 51.4%. The Borough had the highest proportion of all our comparator areas, followed by Coventry with 46.3%.

**Proportion of Young People reaching Level 3 Threshold by age 19
2008/09**



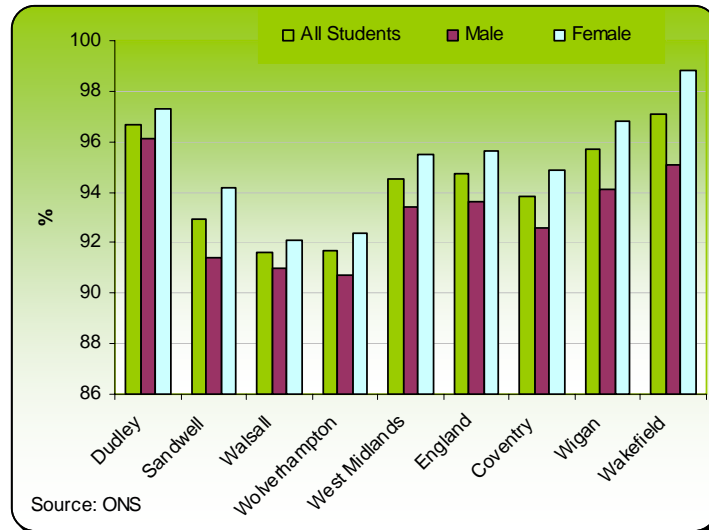
- The proportion of young people learning in the Borough who reached the level 3 threshold increased by 7.9 percentage points between 2004/5 and 2008/9. The gap between Dudley Borough and England decreased over the same period from 5.3 percentage points in 2004/5 to 3.3 percentage points 2008/09.

**Proportion of Young People reaching Level 3 Threshold by age 19
2004/5 to 2008/9**



- In 2008/09, the average A/AS level attainment score for those living in Dudley Borough was 96.7%. The average was slightly higher for females (97.3%) than for males (96.1%). The average score for both the West Midlands and England was lower than the Borough average with Dudley Borough out-performing all of its comparator areas except for Wakefield. The gap between male and female was also less in the Borough than all other areas except for Walsall.

A/AS Equivalent Level Exam Results (by Location of student) - 2008/09



Higher Education Entry

- In 2007/08, 1,175 people in the Borough aged 18-19 entered higher education, 27% of all entrants from the Black Country. This number increased slightly from 1,155 people in 2005/06.

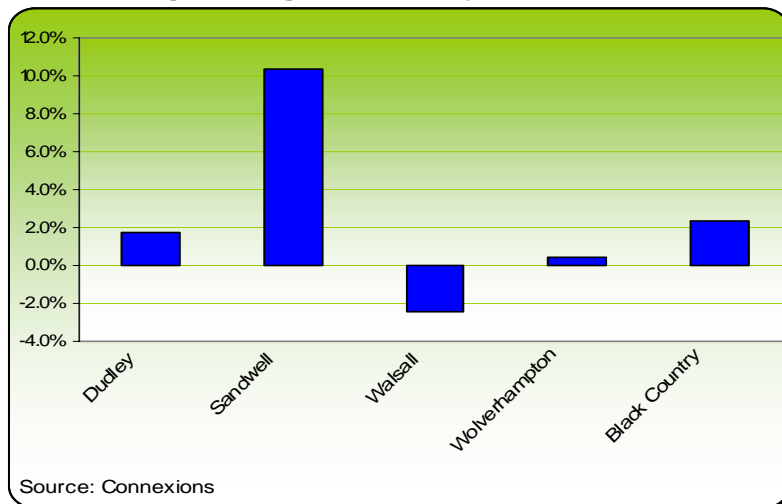
18 & 19 Year Old HE Entrants - Dudley Borough

	2005-06		2006-07		2007-08	
	18	19	18	19	18	19
Dudley	845	310	825	280	870	305
Sandwell	635	335	685	325	720	350
Walsall	735	285	735	235	690	305
Wolverhampton	795	305	795	285	765	340
Black Country	3010	1235	3040	1125	3045	1300

Source: Connexions

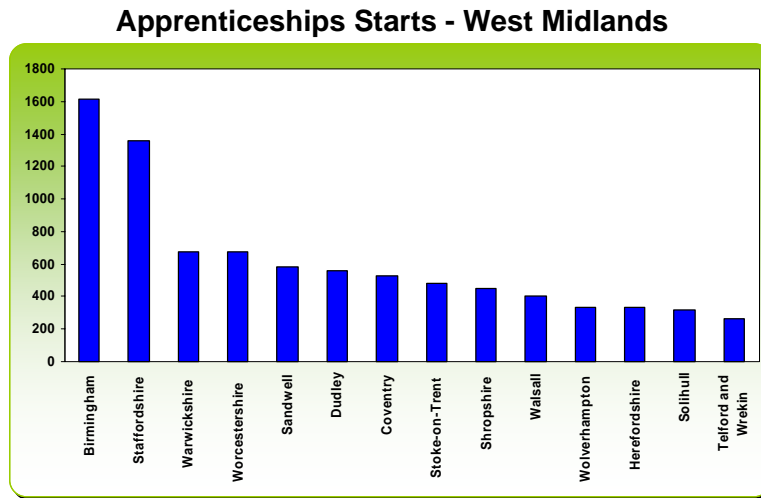
- Between 2005/06 and 2007/08, Dudley Borough experienced a 1.7% increase in the number of 18 and 19 year olds entering HE. Sandwell saw the largest increase of the 4 Black Country areas (10.3%) with Walsall and Wolverhampton experiencing a decrease.

Percentage Change in HE Entry - 2005/06 to 2007/08



Apprenticeships

- As at January 2011 in the 2010/11 academic year, Dudley Borough has the sixth highest number of people in the WM region starting Apprenticeships. A total of 560 16-18 year olds started an apprenticeship, a slight decrease (-3%) against the previous year.



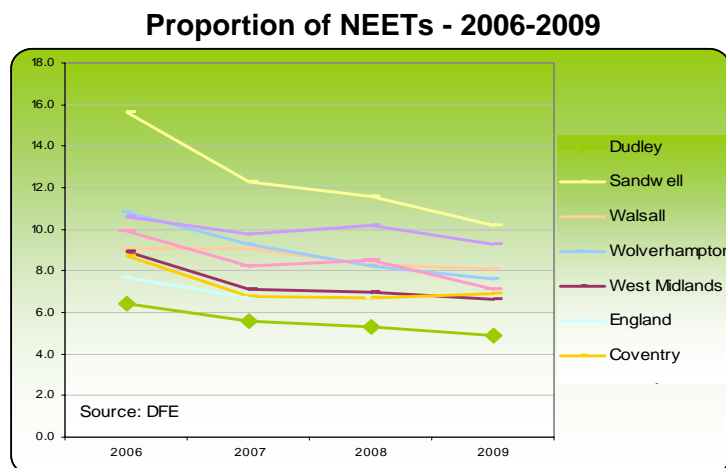
Source: NAS

Graduate Retention

- A survey for the Graduate Retention attraction and employment study (2008) undertaken by the West Midlands Regional Observatory, found that 60% of graduates surveyed stayed in the region.
- Of the other 40%, most left for London (12%) and the South East (8%) mainly for higher value added private sector industries such as manufacturing, engineering construction, and utilities and knowledge based services such as professional and IT & telecommunications.
- Another reason for graduates leaving the region for the south was for significantly higher salaries (17% of those working elsewhere earn £50,000 a year or more compared with 6% who stayed in the region).

Young People Not in Education, Employment or Training

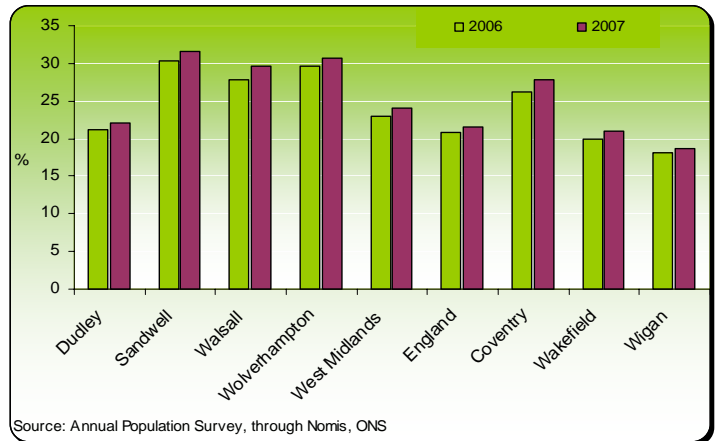
- In 2009, 13,081 people in the Borough aged 16-18 were not in education, employment or training (NEET), equating to 4.9% of 16-18 year olds; lower than the Black Country and WM region. Between 2006 and 2009, the number of NEETs in Dudley Borough known to Connexions decreased by 23.8%. However, the lead between the Borough and the West Midlands decreased from 2.5 percentage points in 2006 to 1.7 percentage points in 2009.



Child Poverty

- In 2008, there were 14,830 children classified as living in poverty in Dudley Borough, which equates to 22.1% of the Borough's children.
- In the West Midlands, the proportion is slightly higher (23.3%) whilst nationally the rate is 21%.
- 11,330 children were living in households in receipt of JSA or Income Support.
- The Child Well-Being Index 2009 ranked Dudley Borough 228th out of 354 local authorities (354 being the worst) with regards to child well-being.

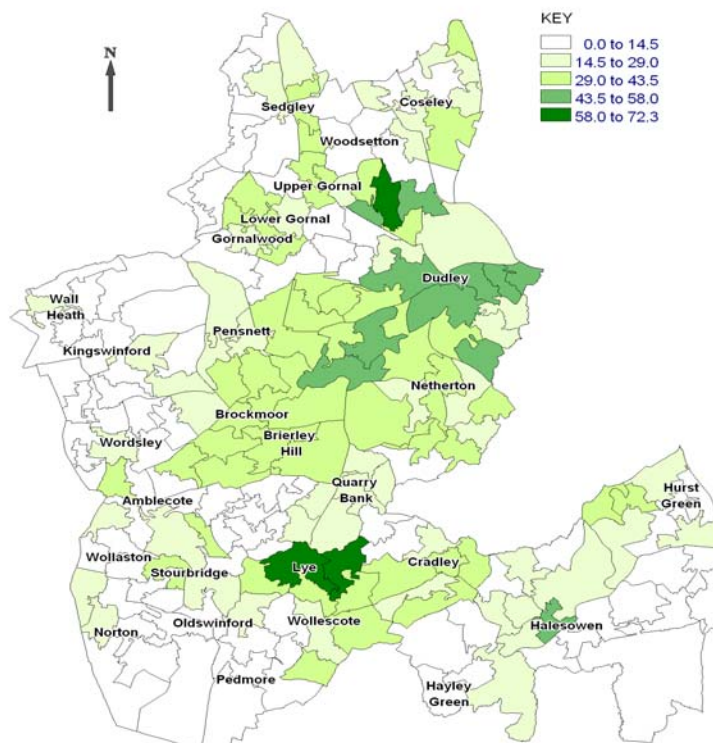
Proportion of Children in Poverty - 2006 & 2007



Concentrations of Child Poverty

- Analysis at LSOA area level highlights the concentrations of child poverty in Dudley Borough. This pattern is commonly seen within the Borough, where some of the most deprived areas are in Castle & Priory Ward, areas around Dudley Town Centre, St Thomas's Ward, Sledmere & Tansley, Woodside, Lye & Stambermill and Halesowen West. In one area, approaching three quarters of children (72%) have been identified as living in poverty by this measure.

**Percentage of Dependent Children Under 20 in "Poverty",
Super Output Areas, Dudley Borough**



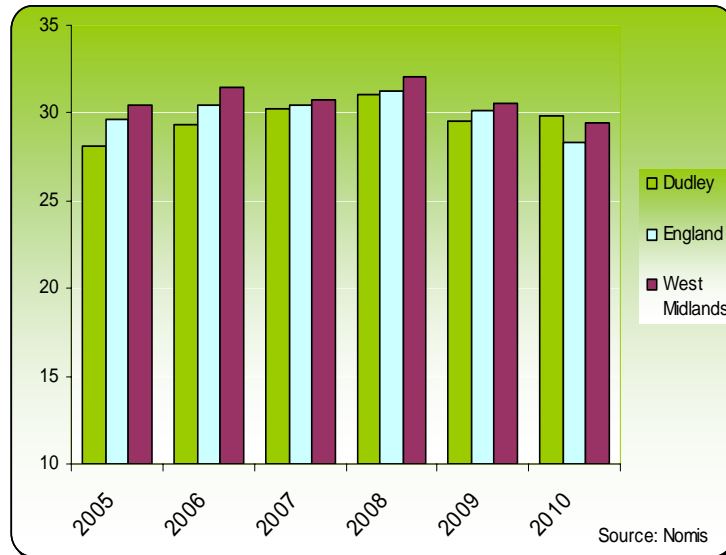
Source: HMRC, 2007
Produced by: NL, 28/04/2010, Strategic Research & Intelligence Team, Dudley M.B.C.
Based on the Ordnance Survey mapping with the permission of the Controller of Her Majesty's Stationery Office © Crown Copyright
Unauthorised reproduction infringes Crown Copyright and may lead to prosecution or civil proceedings. Dudley M.B.C. 100019566

- More detailed analysis on child poverty is available in the [Dudley Borough Child Poverty Needs Assessment](#).

Unemployment

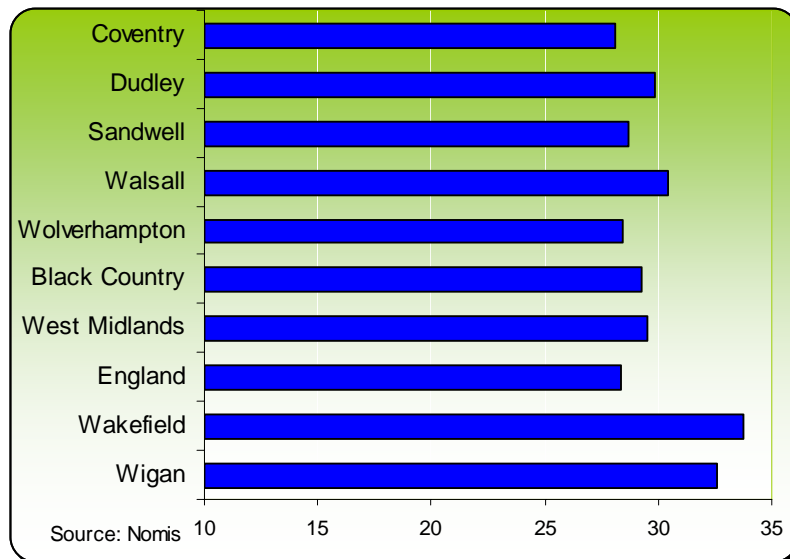
- In August 2005, 1,670 people aged 18-24 in the Borough were in receipt of JSA. By 2009, there were 3,265 claimants in this age group; an increase of 96%.
- Currently, as a proportion of all JSA claimants, the Borough has a higher rate (29.9%) than both the WM region (29.5%) and England (28.4%).

**Proportion of JSA Claimants Aged 18-24
Aug 2005 - Aug 2010**



- The proportion of JSA claimants aged 18-24 in the Borough is higher than the Black Country, WM region and national averages. Of the Black Country Authorities, Dudley Borough has the second highest proportion behind Walsall. In comparison, 33.8% of claimants in Wakefield and 32.6% in Wigan were aged 18 to 24.

Proportion of JSA Claimants Aged 18-24 - August 2010



- In August 2010, 55.6% of claimants aged 18-24 had been claiming for less than 6 months, compared with 58.6% for the WM region and 63% nationally.
- 18.9% of claimants in the Borough had been claiming for between 6 and 12 months compared with 19.2% for the WM Region and 19% nationally.
- Over a quarter (25.5%) of all claimants aged 18-24 in the Borough had been claiming JSA for longer than a year; higher than regional (22.2%) and national (18%) averages.