

Tips
Sit up straight
Relax shoulders
Cupped hands
Curved fingers
Keep hands level

Spider Fingers

With finger 1 on MIDDLE C, play :

1 2 3 4 5 4 3 2 1 2 3 4 5 4 3 2 1

Mary had a Little Lamb

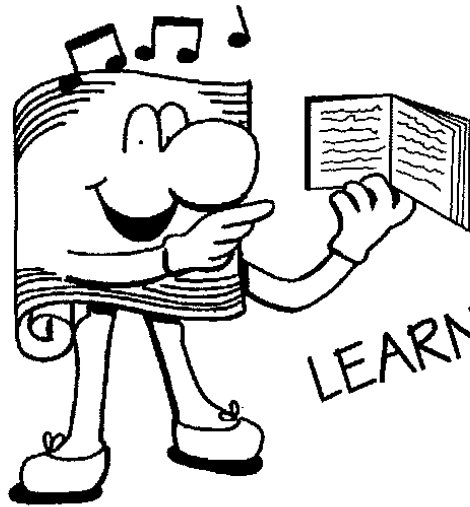
3 2 1 2 - 3 3 3

2 2 2 - 3 5 5

3 2 1 2 - 3 3 3 3

2 2 3 2 - 1.....

RHYTHMS



LEARN THESE

● This is a Semibreve. Count 4 crotchets

♪ This is a Minim. Count 2 crotchets

♪ This is a Crotchet. Count 1 crotchet

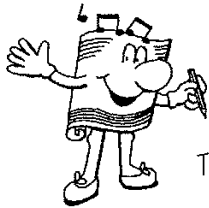
$\frac{4}{4}$ This tells us there are 4 crotchet beats in each bar.

Practise these on your keyboard....

1. Crotchets
2. Minims
3. Semibreves

Try this again, but this time see if you can keep in time with the rhythm on your keyboard.

THE TREBLE CLEF



Trace over these :



Now practice drawing eight treble clefs.

This is the Stave



This note is middle C



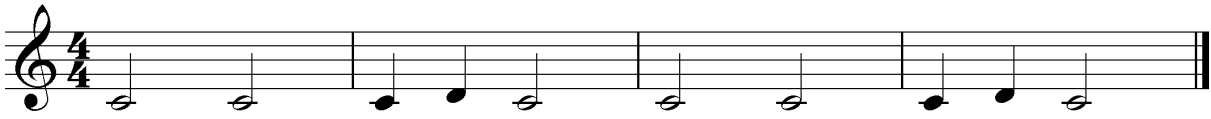
C Song



D Song



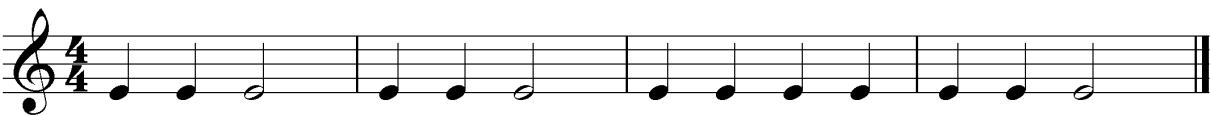
Little Step



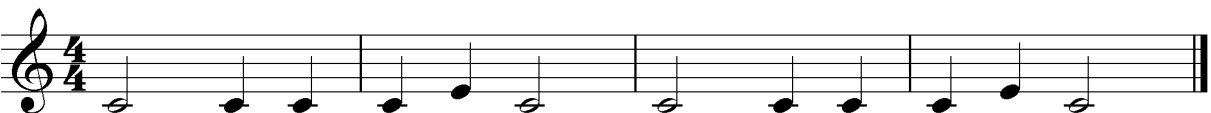
Breakfast in Bed



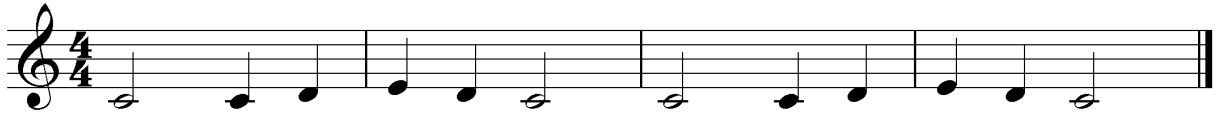
E Song



Little Jump



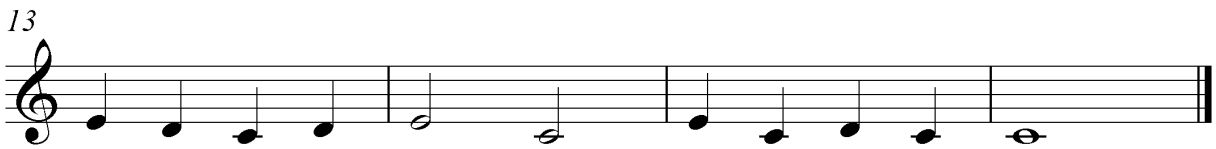
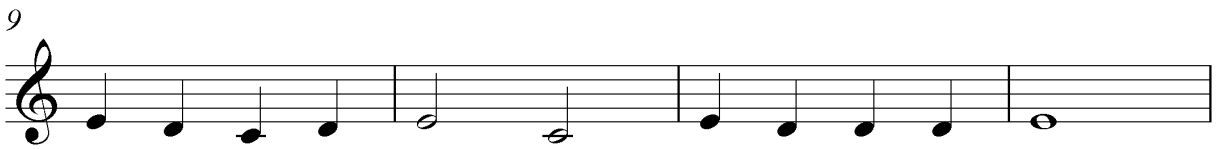
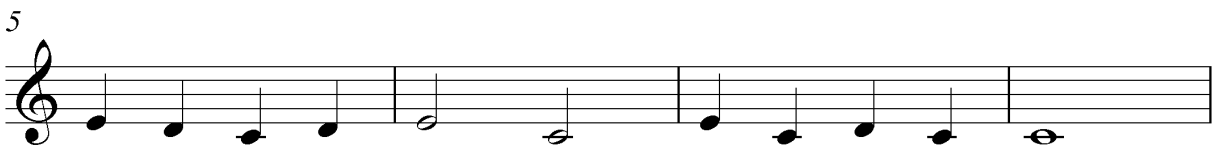
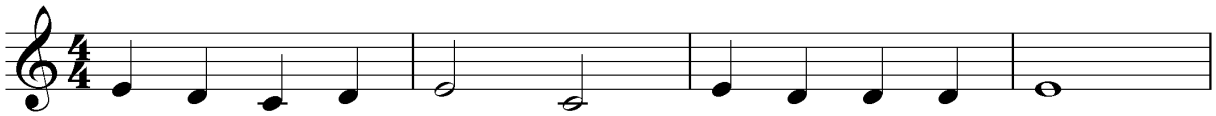
Little Hill



Coffee Time



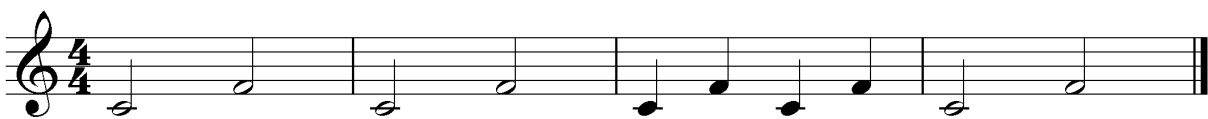
Eeeaaazzy



F Song



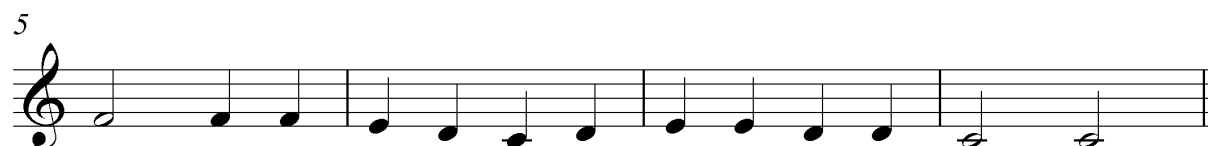
Little Leap



Fairground



Sunset



Dragon Dance



5



9



13



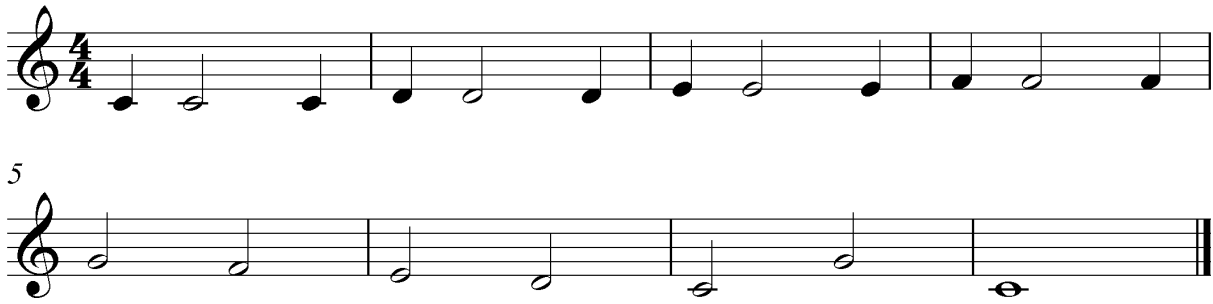
G Song



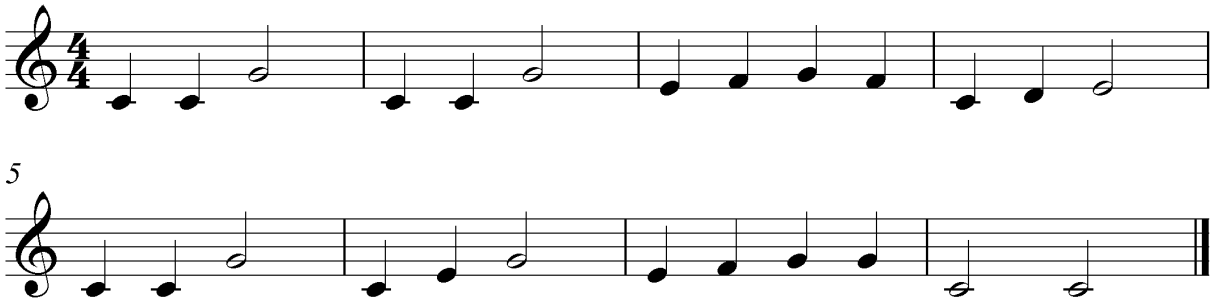
Big Leap



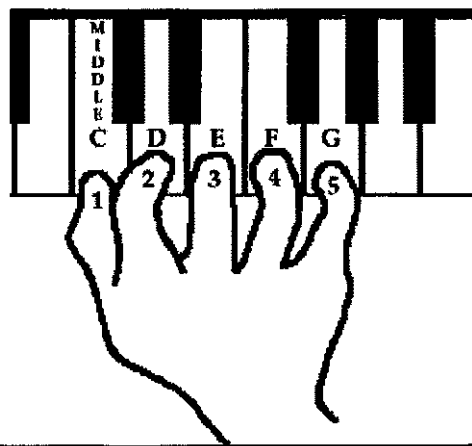
Step by Step



Fanfare



You have now learnt all these notes.



Rests

A rest is a silent time in music

This is a Crotchet rest



This is a Minim rest



Rest Up

5

9 C

13

A musical score for the exercise 'Rest Up' in 4/4 time. It consists of four staves of music. The first staff starts with a common time signature 'C' and contains a sequence of quarter notes and quarter rests. The second staff starts at measure 5 and contains quarter notes, quarter rests, and two half rests. The third staff starts at measure 9 with a common time signature 'C' and contains quarter notes and quarter rests. The fourth staff starts at measure 13 and contains quarter notes, quarter rests, and two half rests. The piece ends with a double bar line.

Too Handy

Musical notation for 'Too Handy' in 4/4 time. The piece consists of two staves. The first staff begins with a treble clef and a 4/4 time signature. It contains four measures of music, each with a C chord indicated above the staff. The notes in the first measure are C4, E4, G4, and C5. The second measure has C4, E4, G4, and C5. The third measure has C4, E4, G4, and C5. The fourth measure has C4, E4, G4, and C5. The second staff begins with a '5' indicating a fifth finger starting point, followed by four measures of music, each with a C chord indicated above the staff. The notes in the first measure are C4, E4, G4, and C5. The second measure has C4, E4, G4, and C5. The third measure has C4, E4, G4, and C5. The fourth measure has C4, E4, G4, and C5. The piece ends with a double bar line.

Chord Exercise 1

Musical notation for 'Chord Exercise 1' in 4/4 time. The piece consists of a single staff with a treble clef and a 4/4 time signature. It contains four measures of music, each with a chord indicated above the staff. The first measure has a C chord. The second measure has a C chord. The third measure has a G chord. The fourth measure has a G chord. The piece ends with a double bar line.

Gee Whizz

Musical notation for 'Gee Whizz' in 4/4 time. The piece consists of a single staff with a treble clef and a 4/4 time signature. It contains four measures of music, each with a G chord indicated above the staff. The notes in the first measure are G4, B4, D5, and G5. The second measure has G4, B4, D5, and G5. The third measure has G4, B4, D5, and G5. The fourth measure has G4, B4, D5, and G5. The piece ends with a double bar line.

Chord Exercise 2

Musical notation for 'Chord Exercise 2' in 4/4 time. The piece consists of a single staff with a treble clef and a 4/4 time signature. It contains four measures of music, each with a chord indicated above the staff. The first measure has a C chord. The second measure has a G chord. The third measure has a C chord. The fourth measure has a G chord. The piece ends with a double bar line.

Raindrops

Musical score for 'Raindrops' in 4/4 time. The score consists of two staves of music. The first staff has a treble clef and a 4/4 time signature. The melody is written in quarter notes and half notes. The lyrics are: 'Rain-drops, rain-drops, go a-way! Come a-gain a-no-ther day.' The second staff continues the melody with the lyrics: 'Rain-drops, rain-drops, go a-way! I would like to go and play.' Chords are indicated by 'C' and 'G' above the notes.

C G
Rain-drops, rain-drops, go a-way! Come a-gain a-no-ther day.
5 C G C
Rain-drops, rain-drops, go a-way! I would like to go and play.

Little Bird

Musical score for 'Little Bird' in 4/4 time. The score consists of four staves of music. The first staff has a treble clef and a 4/4 time signature. The melody is written in quarter notes and half notes. The second staff continues the melody. The third staff continues the melody. The fourth staff continues the melody and ends with a double bar line. Chords are indicated by 'C' and 'G' above the notes.

C G C
5 G C
9 G C
13 G C

Flip Flops

Musical notation for 'Flip Flops' in 4/4 time. The first staff contains four measures with chords F, F, F, and F. The second staff starts with a measure number '5' and contains four measures with chords F, F, F, and F. The melody consists of quarter notes and rests.

Chord Exercise 3

Musical notation for 'Chord Exercise 3' in 4/4 time. The staff contains four measures with chords C, C, F, and F. The notes are whole rests.

Chord Exercise 4

Musical notation for 'Chord Exercise 4' in 4/4 time. The staff contains four measures with chords C, F, C, and F. The notes are whole rests.

Fantastic

Musical notation for 'Fantastic' in 4/4 time. The first staff contains four measures with chords C, F, C, and F. The second staff starts with a measure number '5' and contains four measures with chords C, F, C, and F. The melody consists of quarter notes and a whole note.